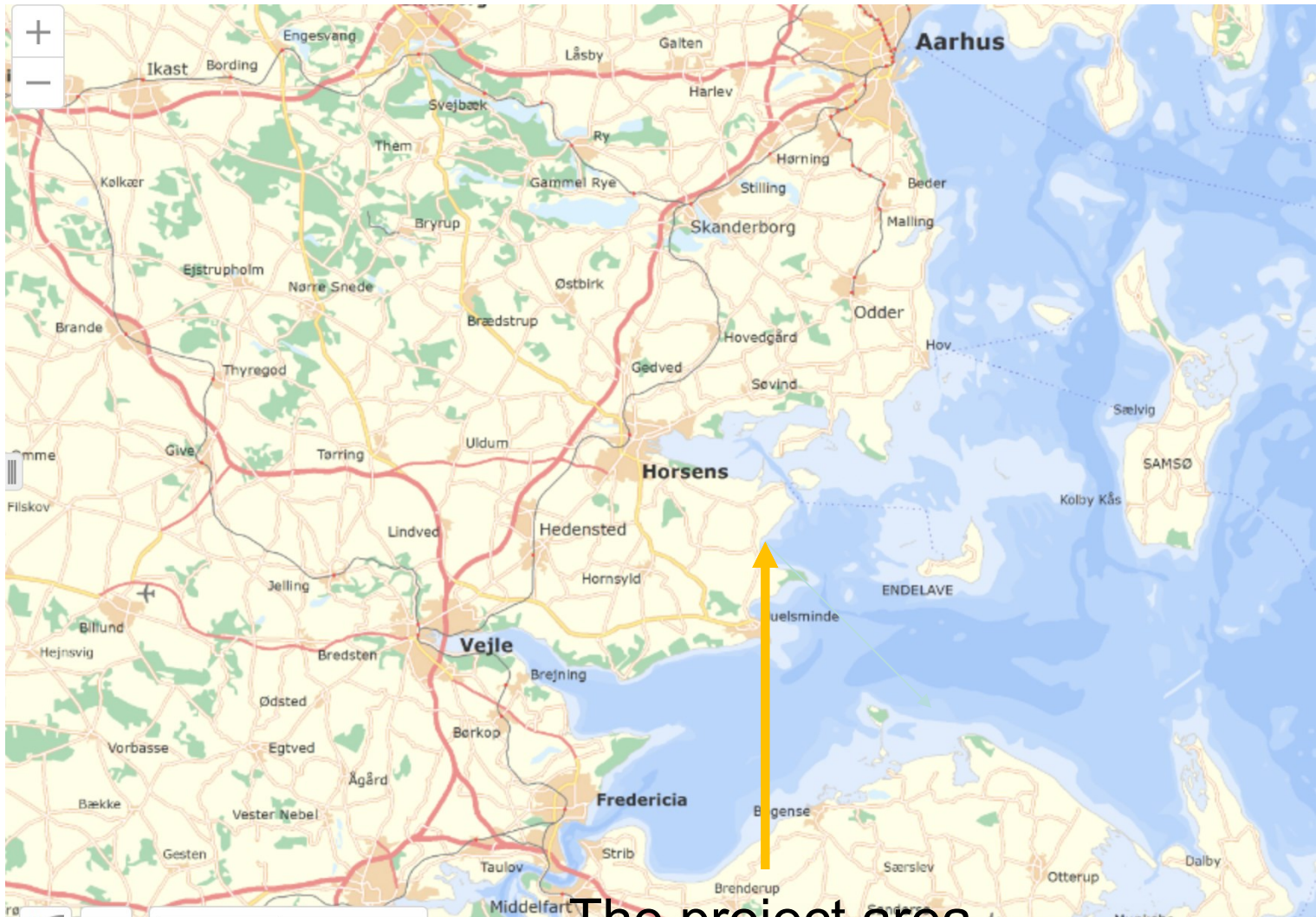




Cultural heritage and climate adaption in Hedensted Municipality

C8 Håb til Håb

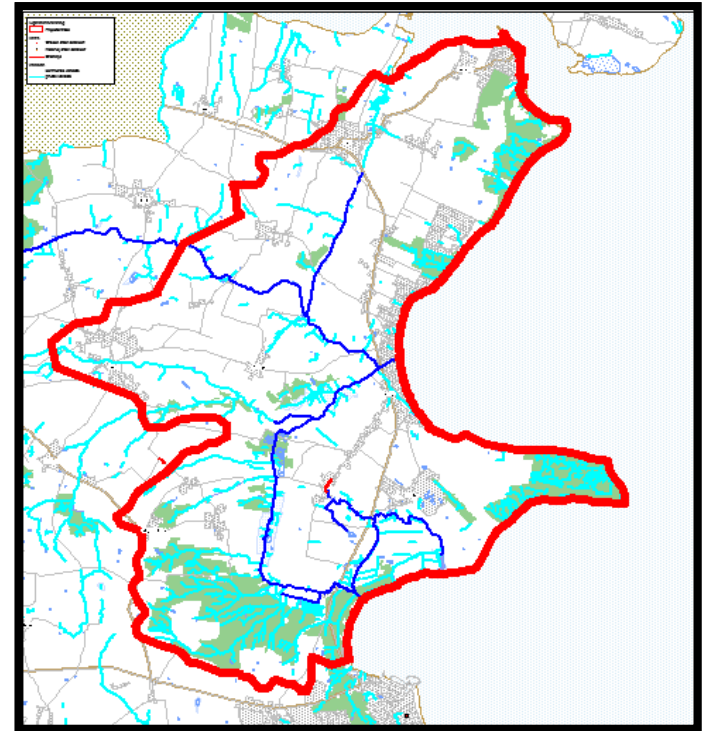
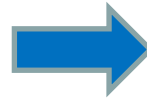


The project area



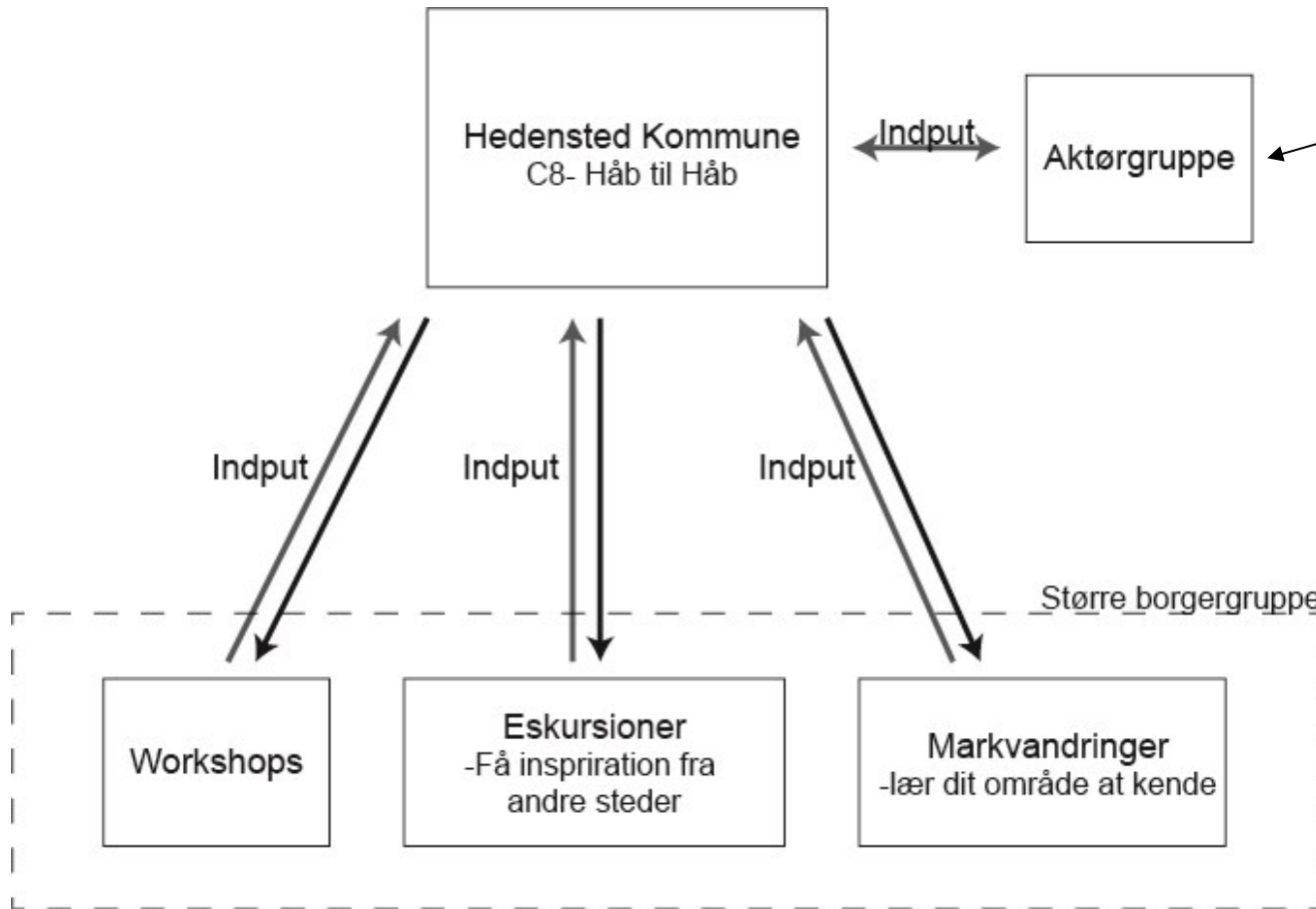
Håb til Håb project area

C2C
Coast to Coast
Climate Challenge





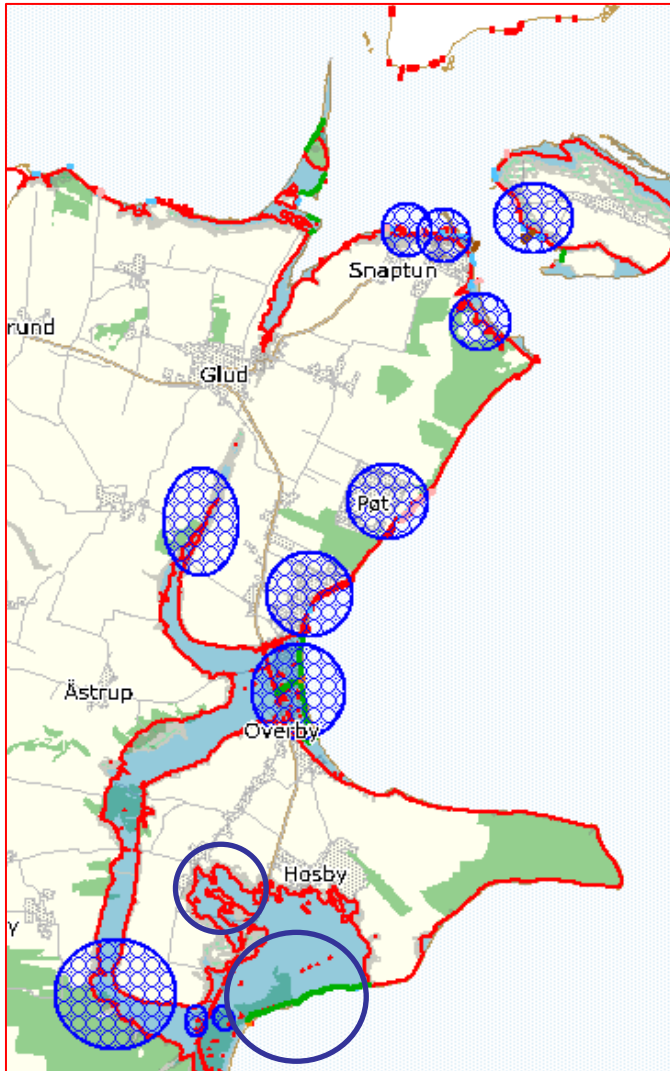
The setup



The actor group is composed of local people, a kind of local advisory board for the municipality prior to the workshops



Points of impact



Snaptun og Hjarnø

Dykes at As Vig and Sandbjerg Vig

WWTP and settlement south of Hosby

Pøt and As Vig north

Farmland, watercourse and nature areas

As Vig, Kirkholm and Overby

As and Hosby

Paths (access)



Why cultural heritage?



- The area consist of farms and few local villages (local knowlegde and history)
- In combination with large areas of holiday cottages (lack of especially local history)
- Our idea was to create a common knowledge/interest (cultural heritage) among the different groups before starting working with climate topics
- And the method was open workshops



Workshop climate and cultural heritage





Field walks





Åstrup Kær, local area

C2C
Coast to Coast
Climate Challenge





Local coast, dykes and water lock





Bus tour Glud – Bjerre - Håbet

C2C
Coast to Coast
Climate Challenge



Foto: Jan Tideman og Hedensted
Kommune





Why cultural heritage?

- The tours were arranged in cooperation with the local museums and Moesgaard museum
- We achieved a common knowledge/interest/understanding among the different groups
- And then we started the workshop (open for all)

