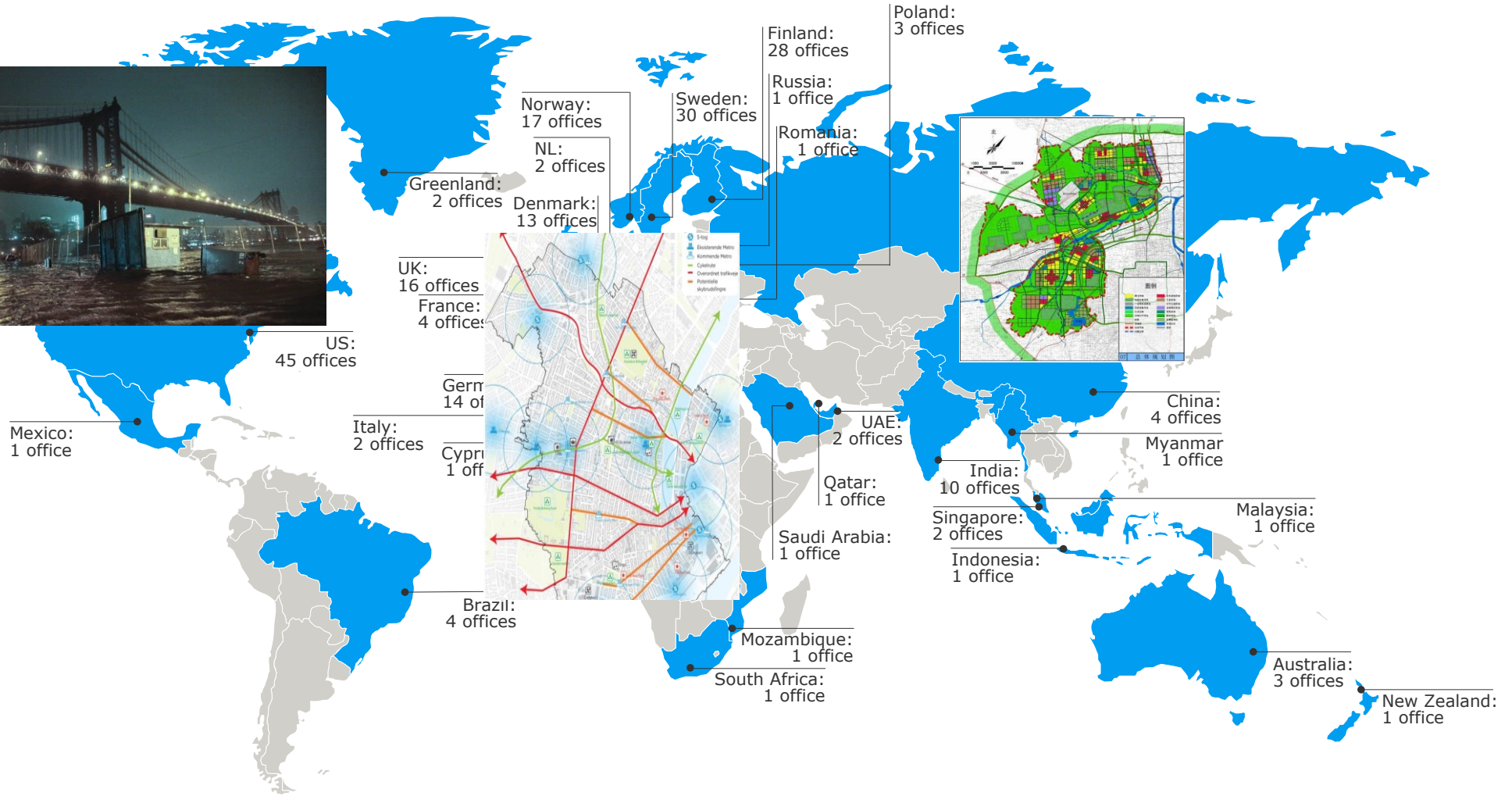




# CREATING LIVABLE RESILIENT CITIES FROM CPH TO US AND CHINA

RAMBOLL

# GEOGRAPHICAL FOOTPRINT

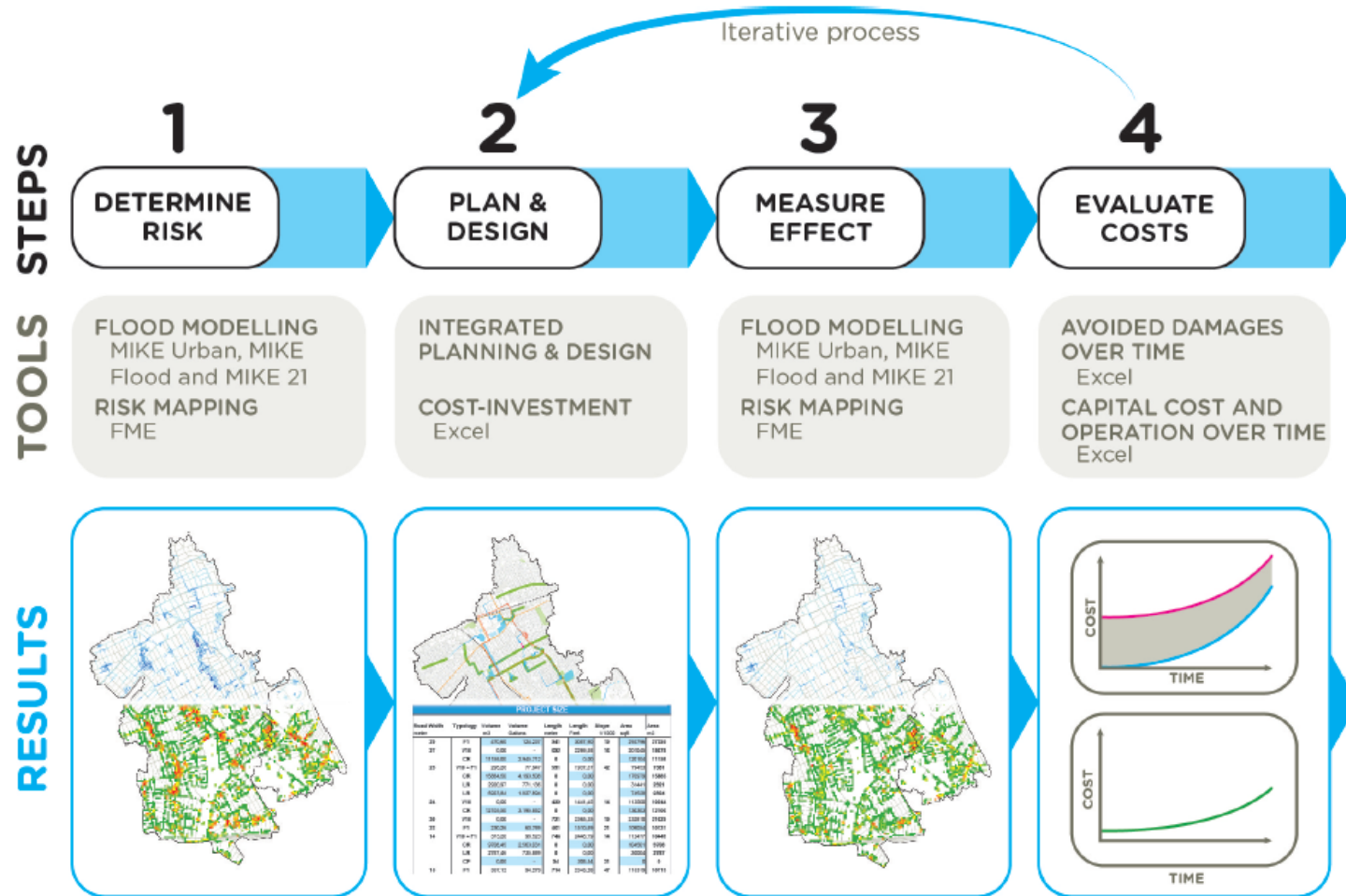


# COPENHAGEN LIVEABLE CITY AND CLOUDBURST MANAGEMENT

Ramboll, SLA Architects et.al.



# MAPPING CLOUDBURST OPPORTUNITIES



# CLOUDBURST MASTERPLAN



## Solutions

Cloudburst Road



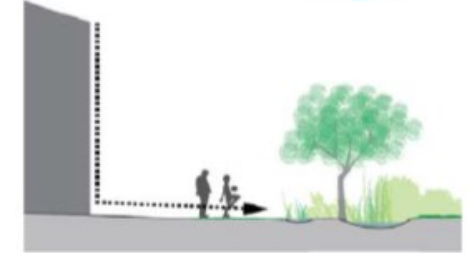
Central Retention



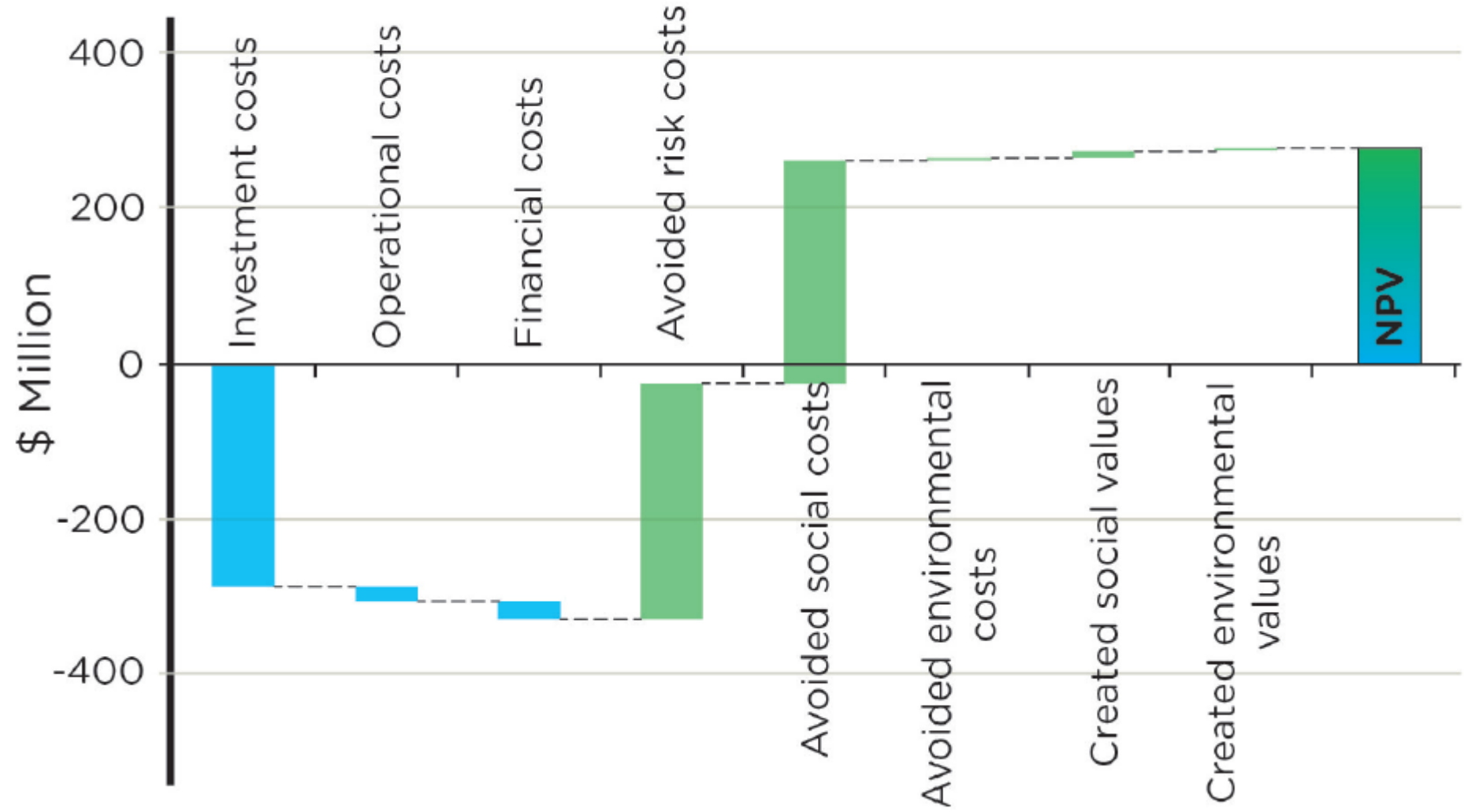
Green Street



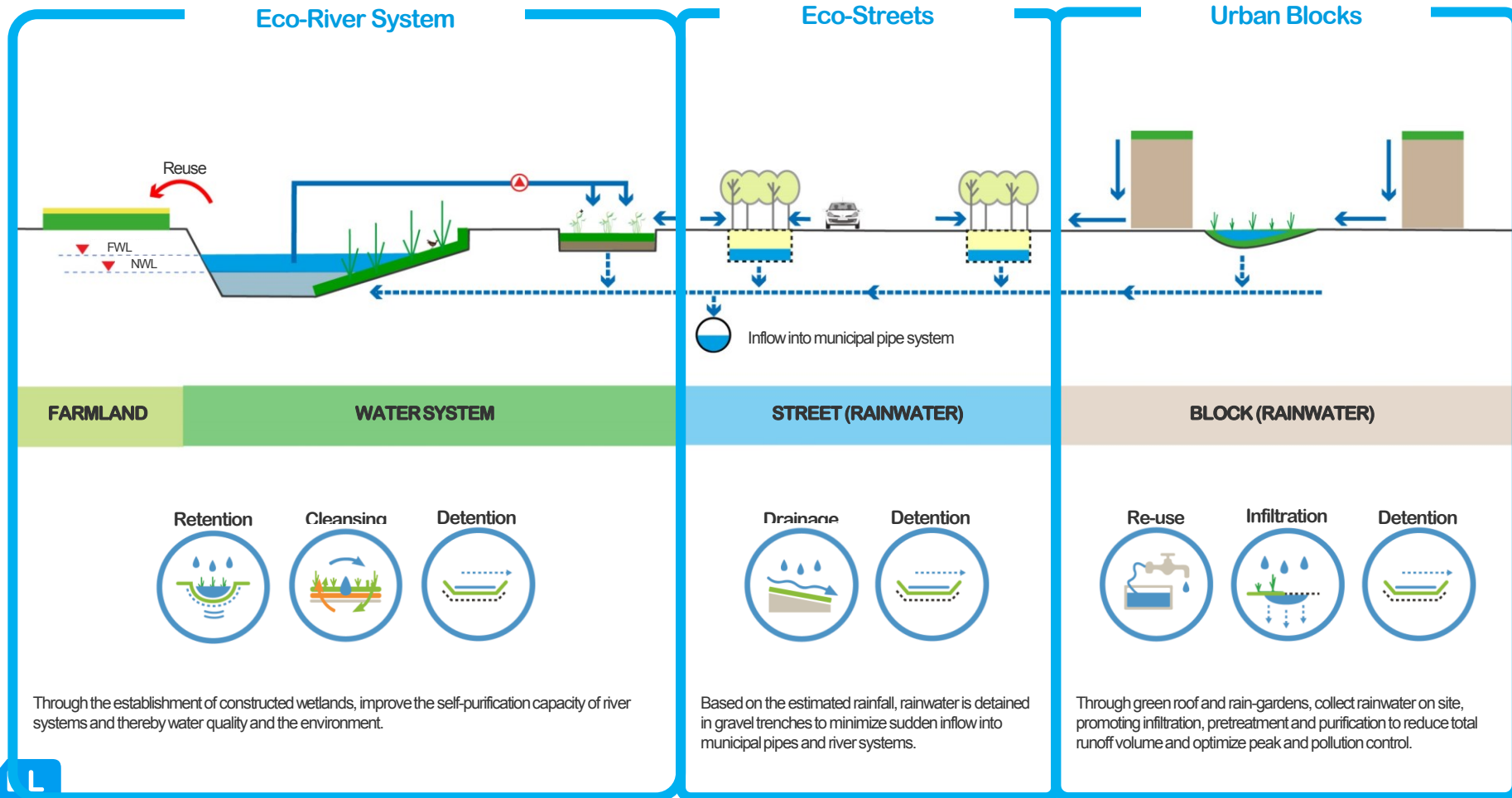
Local Retention



### COSTS AND BENEFITS



# MASTERPLAN FOR WATER MANAGEMENT XIAN CITY, PRC

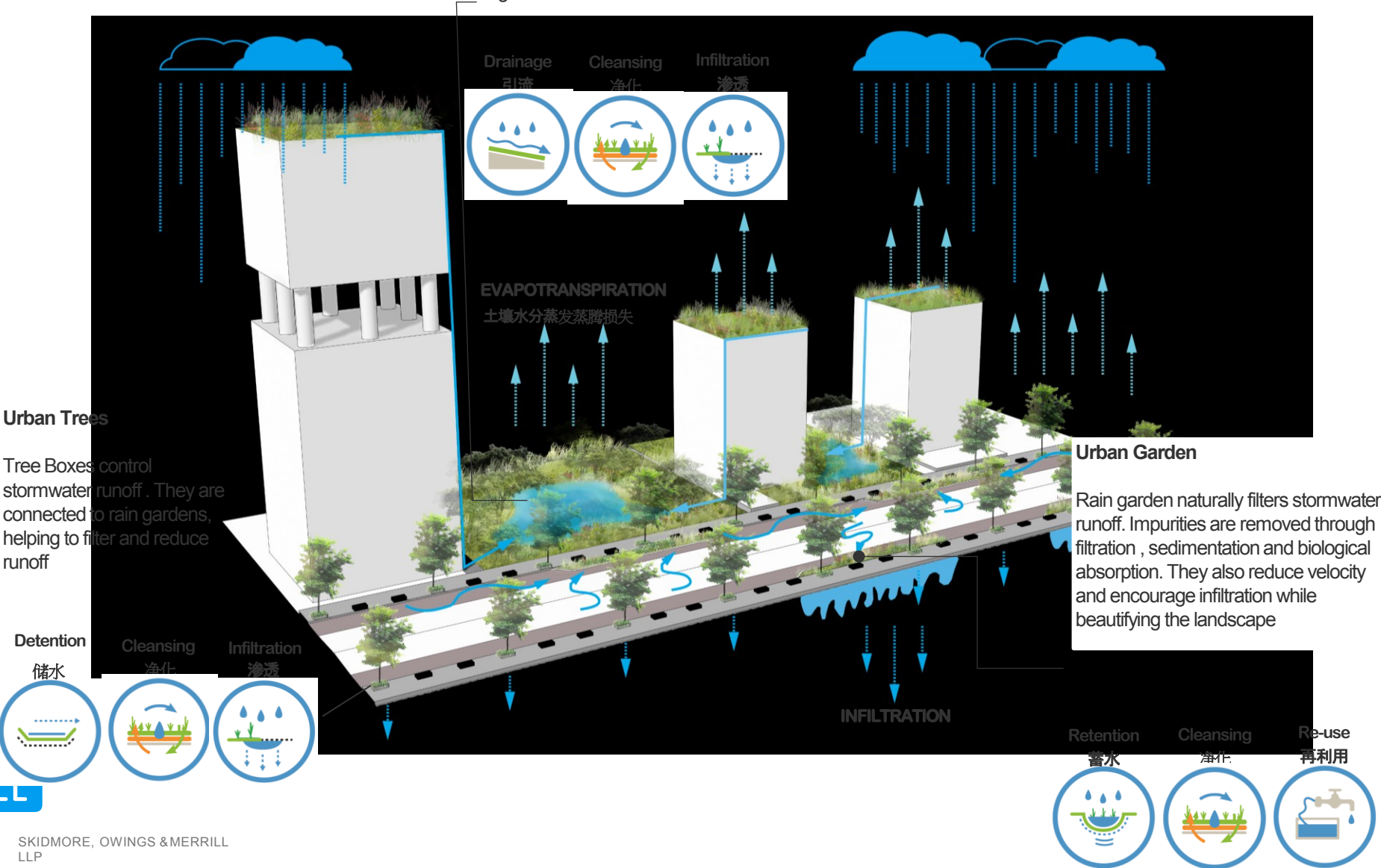


# STORMWATER - WATER MANAGEMENT CYCLE

## Chongqing City, PRC

### Urban Vegetated Waterbodies

Urban Parks and vegetated waterbodies enhance urban beauty, control erosion and regulate water flow and sedimentation





# STORMWATER STRATEGY Chongqing city; PPRC



Cloudburst Street



Green Roof and Water Tank



Green Street

- Green roof
- Cloudburst street
- Local rain water retention



Bishan Park

Cloudburst Retention Area

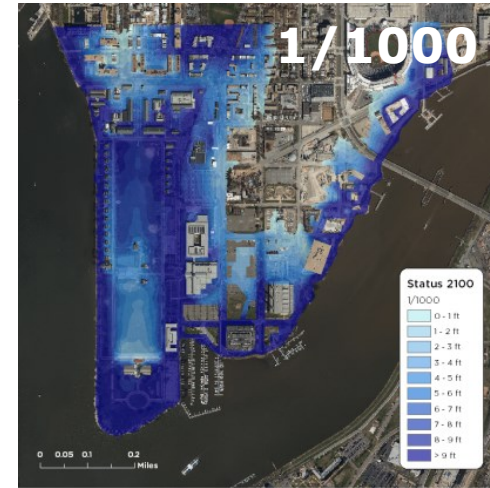
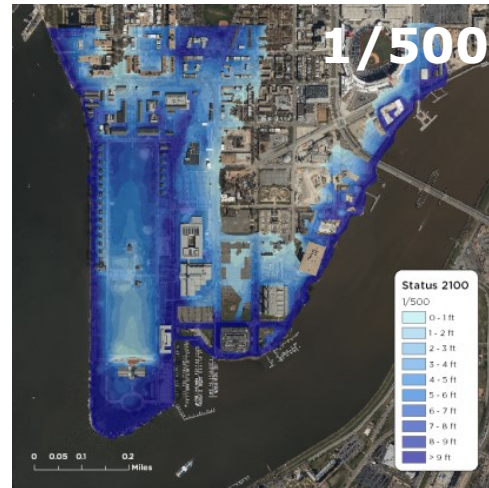
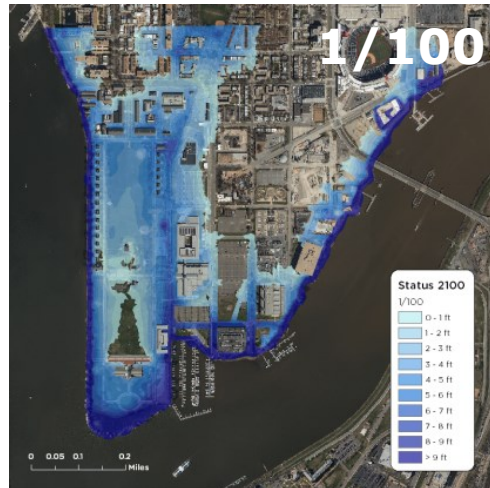
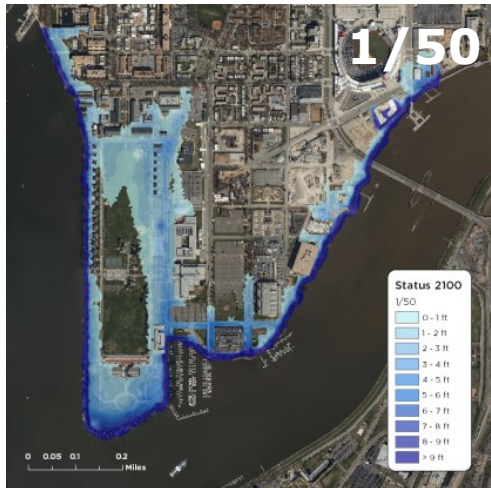


# COASTAL PROTECTION BUZZARDS POINT – WASHINGTON DC

2017



2100



Fluvial and tidal  
storm surge  
events today

Fluvial and tidal  
storm surge events  
in the future

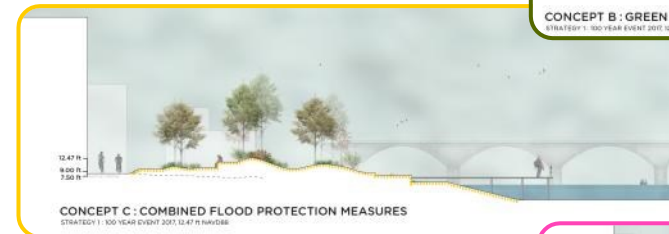
# COASTAL PROTECTION BUZZARDS POINT – WASHINGTON DC



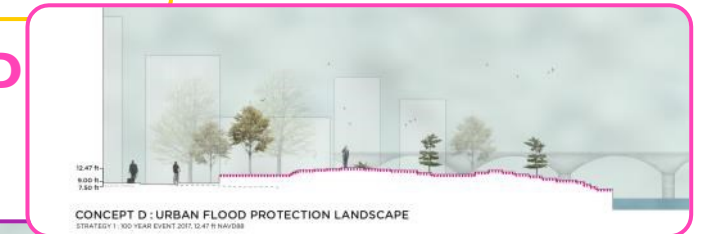
**B**



**C**



**D**



**E**



An aerial photograph of a lush green park with a winding river. In the background, a dense urban skyline with numerous high-rise apartment buildings is visible under a cloudy sky. The park features a paved path, various trees, and a small blue structure near the river.

**Key messages:**

**Analyse risks**

**Think holistic and out of the box across disciplines**

**Create value**

**Validate options**

**RAMBOLL**



**Jens Christian Riise**  
**Market Manager, Climate Resilience**  
**[jcri@rambol.dk](mailto:jcri@rambol.dk)**

**RAMBOLL**