



C2C

Coast to Coast Climate Challenge

Main Outcomes from the C2C CC project

Done. What's next?

19th September 2022, VIA University College, Aarhus



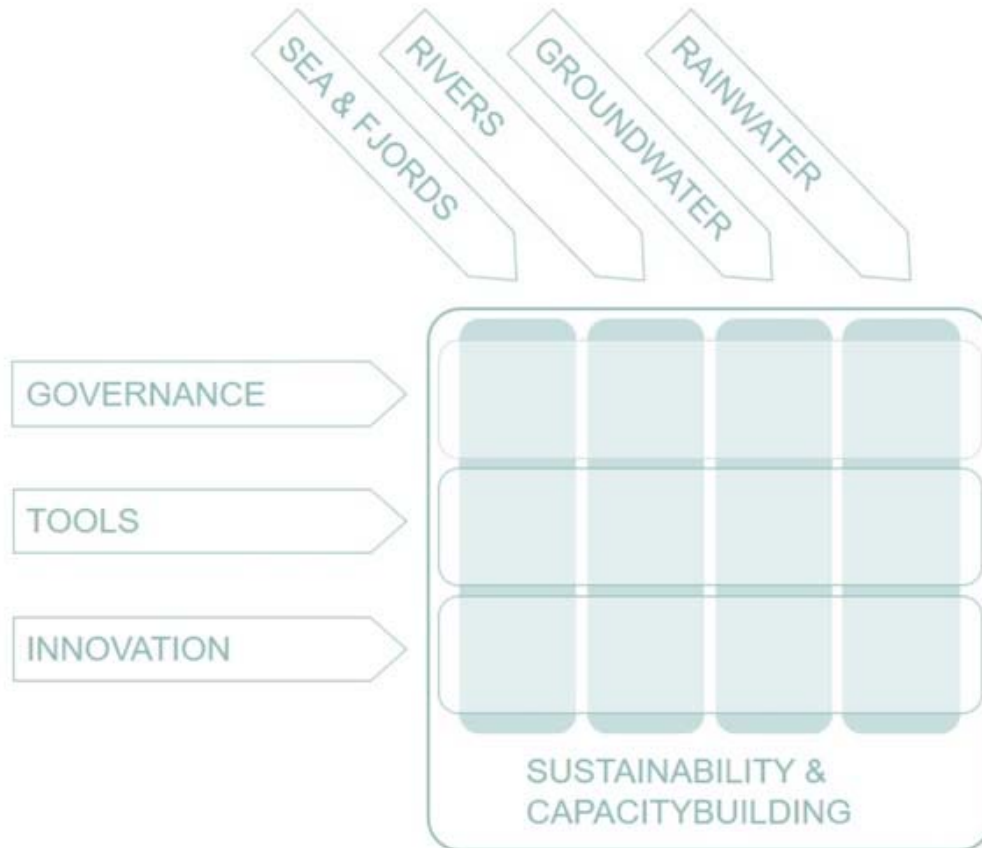
Anja Wejs, NIRAS



Dorthe Selmer, CDR



Short presentation of C2C CC



FACTS about the project:

Holistic climate adaptation in local a regional scale

31 partners

- 18 municipalities
- 8 utilities
- 3 universities
- Central Denmark EU Office
- Central Denmark Region (lead)

24 sub projects

Duration: 6 years

Budget: 12 mil € (7 mil € from the LIFE programme)

www.c2ccc.eu/English/



C2C CC in the European context



- Europe is facing several challenges

EC president Ursula von der Leyen (2020) stated:

*“To use their potential to the fullest and build the Europe we all want to live in, we must adopt a **systemic approach** (...) Europe has the potential to emerge from the current crisis to become a fairer, more prosperous, more sustainable and more resilient society.”*

- Involves policy, legislation, cultures, practices, and social behaviour (Social Innovation Europe, 2012)
- The role of EU Horizon Missions
- The experiences of Climate KIC’s Deep Demonstration
- C2C CC delivers experiences to EU TRAMI

Source: von der Leyen, U. (2020) Foreword by Ursula von der Leyen, President of the European Commission. In SYSTEMIQ, *A System Change Compass - Implementing the European Green Deal in a time of recovery.*



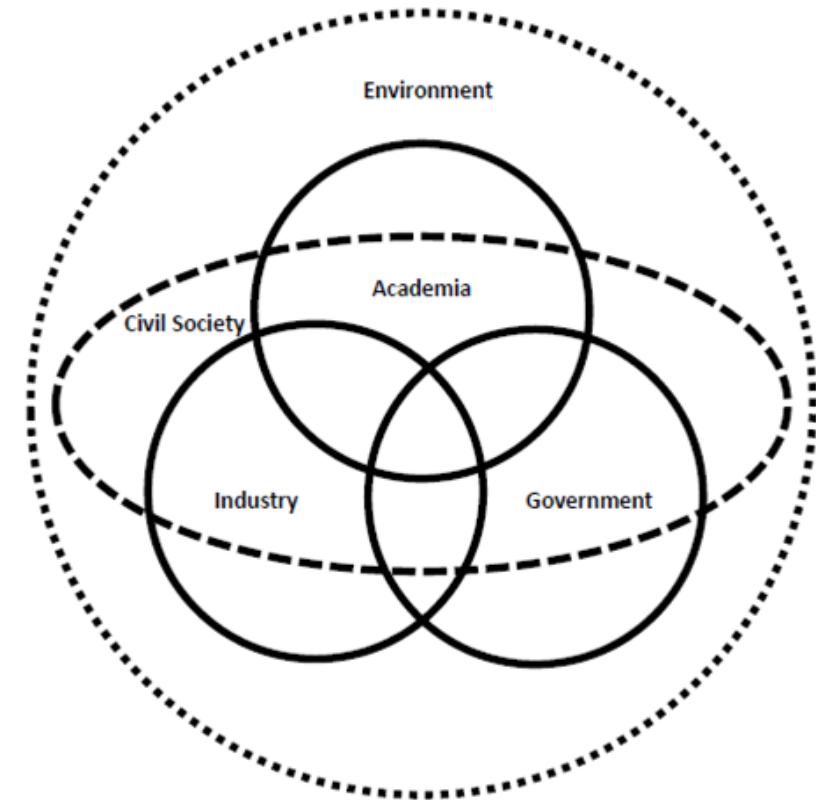
Pepinster, Belgium, July 16, 2021.
Photo by Yves Herman/REUTERS



River Gudenå, 2021.
Photo by Flemming Jeppesen

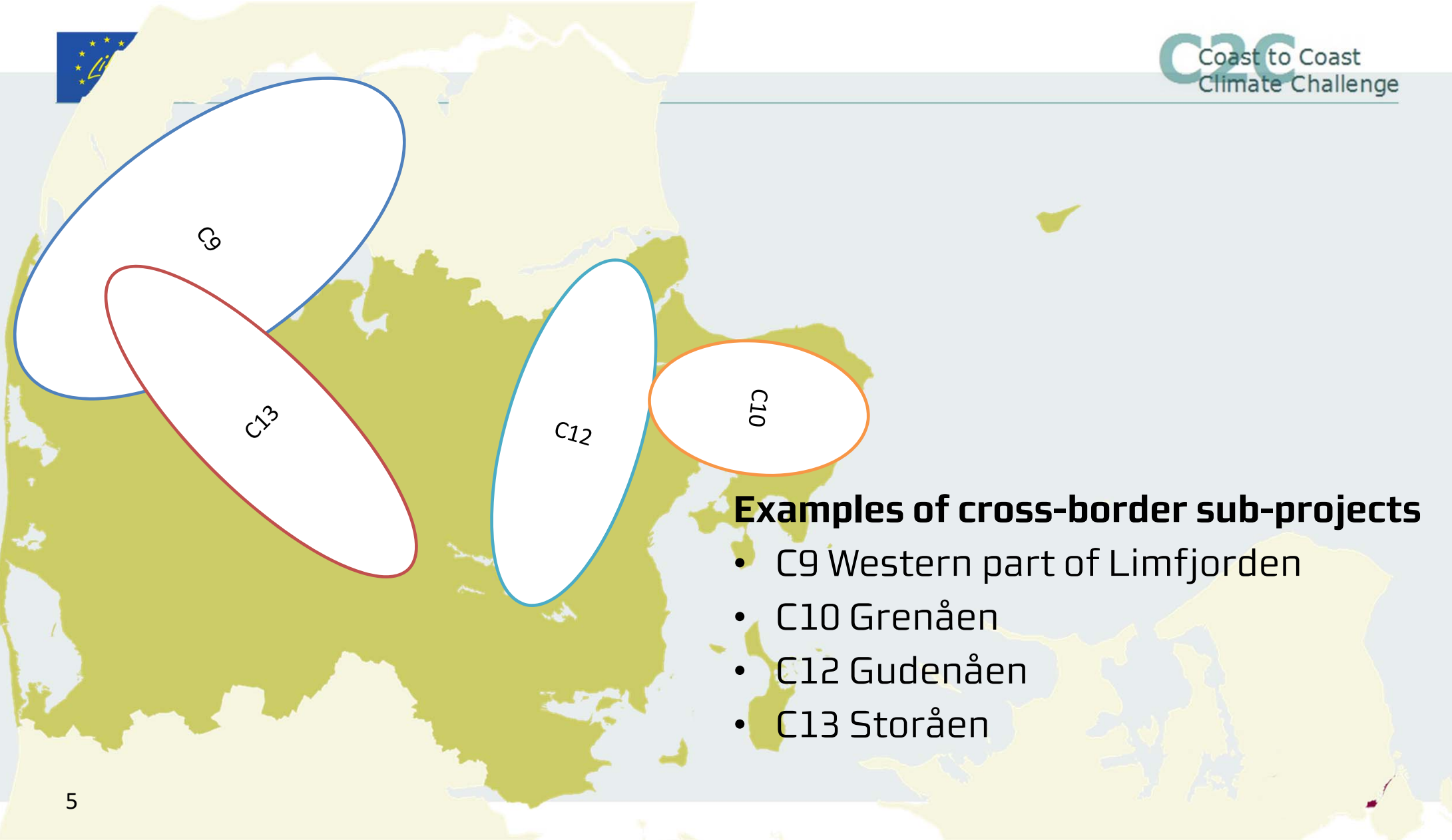


The backbone of C2C CC



The quadruple helix is applied to EU-funded projects and policies

- Innovation happens in the intersections
- Bottom up process-based on the needs and ideas of the partners
- The partners were given the tasks to deliver project-ideas going across borders and organisations



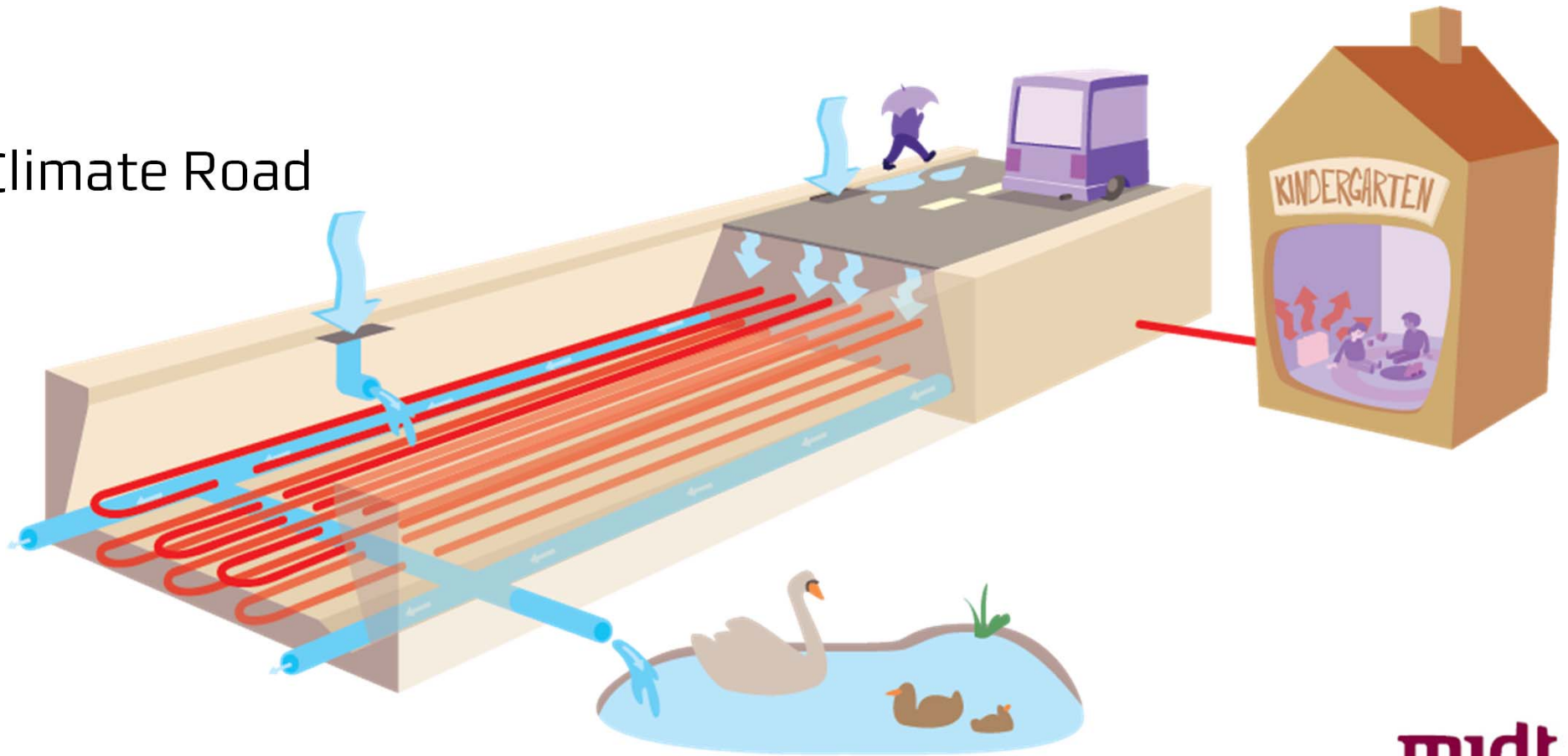
Examples of cross-border sub-projects

- C9 Western part of Limfjorden
- C10 Grenåen
- C12 Gudenåen
- C13 Storåen



Example of technical innovation

The Climate Road







GIS tool to define service levels based on socio economic analysis

The screenshot displays a GIS application interface with several key components:

- Left Panel (Funktioner):** A tree view under 'Produktion' containing categories like 'Input', 'Værdikort', 'Output', 'Kvæksplønde', and 'Vandplønde'. Each category has sub-items with checkboxes and radio buttons.
- Main Map:** A large map showing a coastal area with various colored zones (red, orange, green, blue) and small blue and red markers. A legend on the right side of the map shows color-coded ranges: -3.00 - 0.00 (red), 0.00 - 0.50 (orange), 0.50 - 1.00 (green), and 1.00 - 5.00 (blue). It also includes symbols for 'Gevinst' (blue square) and 'Omkostning' (red square).
- Bottom Panel (Data Table):** A table with columns for 'Kvæksplønde' and 'Nettoprivat' values.

Kvæksplønde	Nettoprivat
33496847	2021-03-02T15:43:1
33457938	2021-03-02T15:43:1
33497827	2021-03-02T15:43:1
- Bottom Right:** A smaller inset map showing a detailed street view, and the 'NIRAS' logo.



What makes the partnership unique?

- High degree of trust
- Consensus on targets
- Common identity





A professional network and community



"It [the C2C CC project] has been a professional education that I would not be able to buy anywhere – [it is] a professional community with 'colleagues' working with the same profession. I am the only person in the municipality working primarily with climate adaptation, so to have a network with other professionals and to be able to participate in the events and study trips have developed my professional skills - and thereby the competences of the municipality within this profession."

(Municipal partner, 2022)



Involvement of stakeholders





Politician Game

Coast to Coast
Climate Challenge



14 **Bæver skaber mindre dæmninger i vandløb**
 Naturlige dæmninger i mindre vandløb skabt ved udsætning af bævere.

1 (Yellow coins) 3 (Water drop)

25 **Etablering af nyt, grønt erhvervsområde**
 Der anlægges et nyt erhvervsområde med grønne åndehuller i form af træer og andre naturelementer.

2 (Yellow coins) 1 (Water drop)

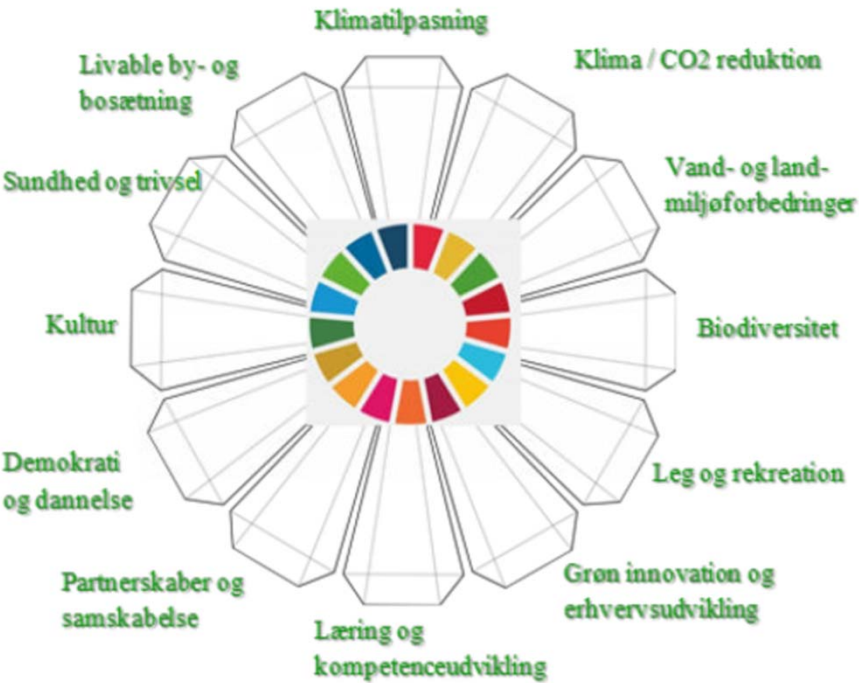
16 **Genslyngning af vandløb**
 Genslyngning af eksisterende udrettet vandløb. Dette beskytter nærliggende områder mod oversvømmelse.

4 (Yellow coins) 3 (Water drop)

3 (CO2) 5 (CO2) 9 (Butterfly) 7 (Heart)

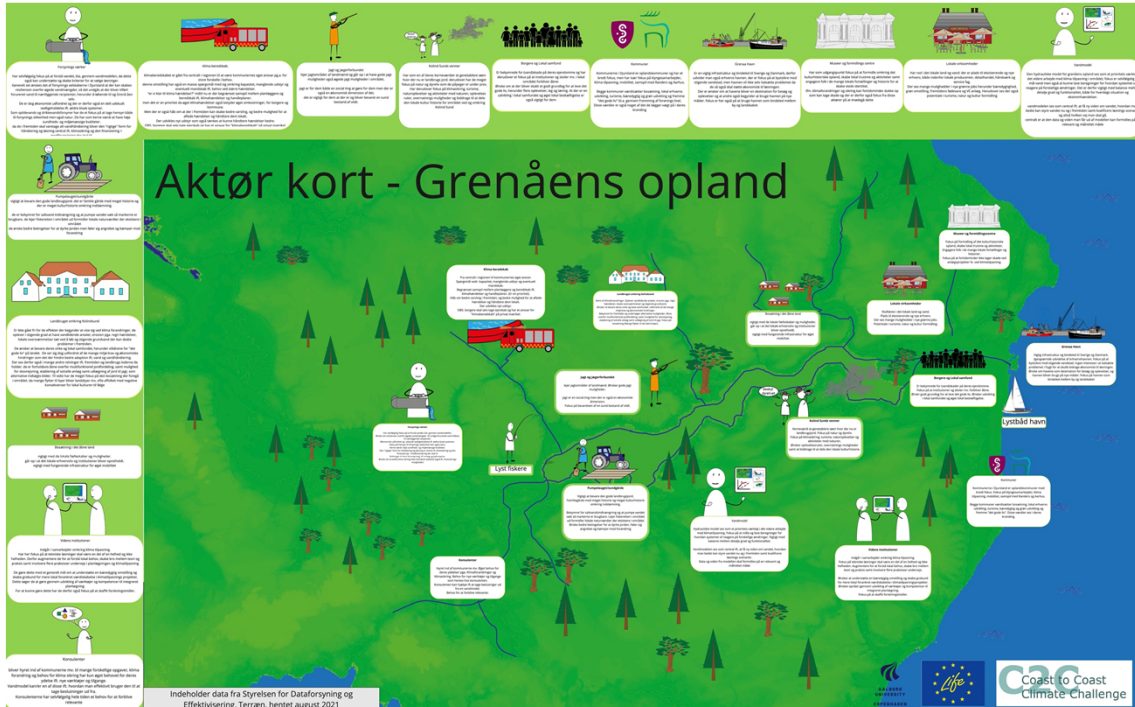


Tools for planning with added values





Mapping of stakeholders





Mutual Gains Approach



5 ESSENCES OF CONNECTIVE NEGOTIATION



1. Focus on interests, not positions



2. Create value (enlarge the pie)



3. Know your BATNA (Best Alternative to a Negotiated Agreement)



4. Work on sustainable relationships, building trust



5. Joint fact finding



Next steps

Dogma rules

- Holistic
- Nature based
- Cross boundary
- Dynamic
- Community oriented





Next steps



- Implementation of the developed solutions
- Implementation of different methods/approaches (e.g. use of ecosystem services, connective negotiation)
- Development of more technical tools and decision support tools
- Establishing new partnerships and designing new developing projects

