



Vlaanderen
is milieu

Working Together on a Climate- Resilient Europe

VLAAMSE
MILIEUMAATSCHAPPIJ

How dare you!



Brussels Climate Strike (December 2018)



Is the problem really a problem?



What about Climate Change



Experts

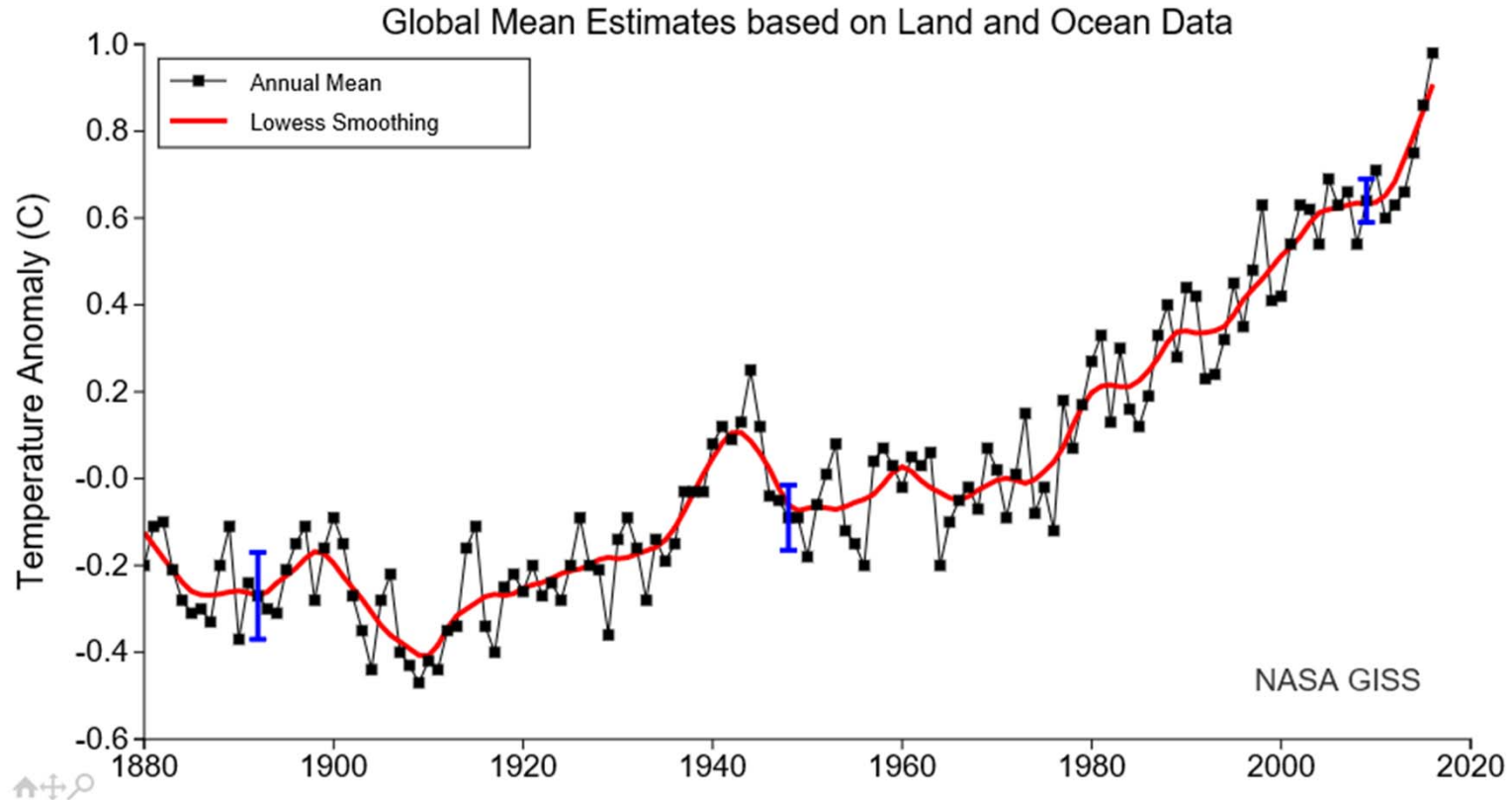


Proof

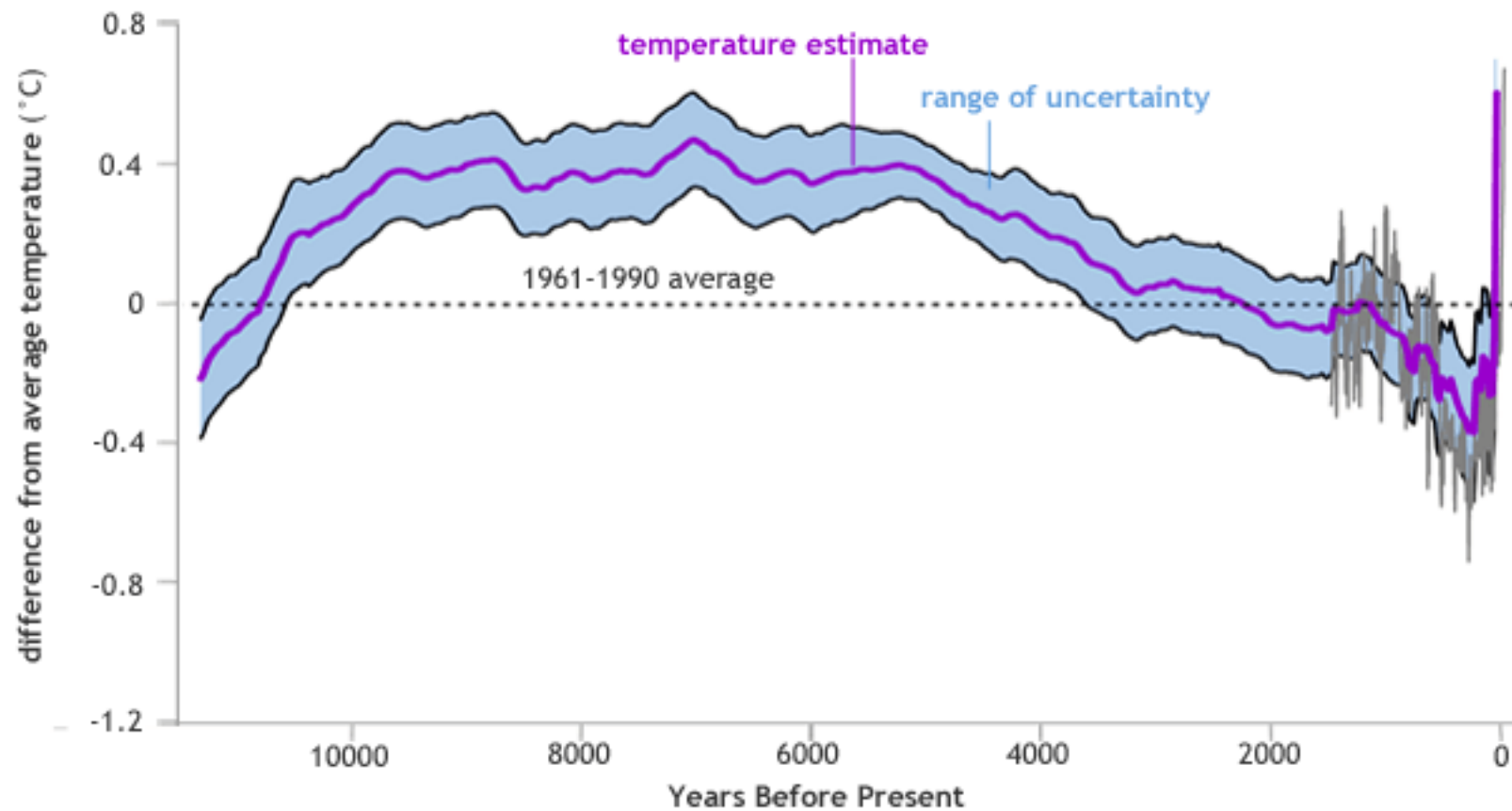


Indications

The earth is heating up!

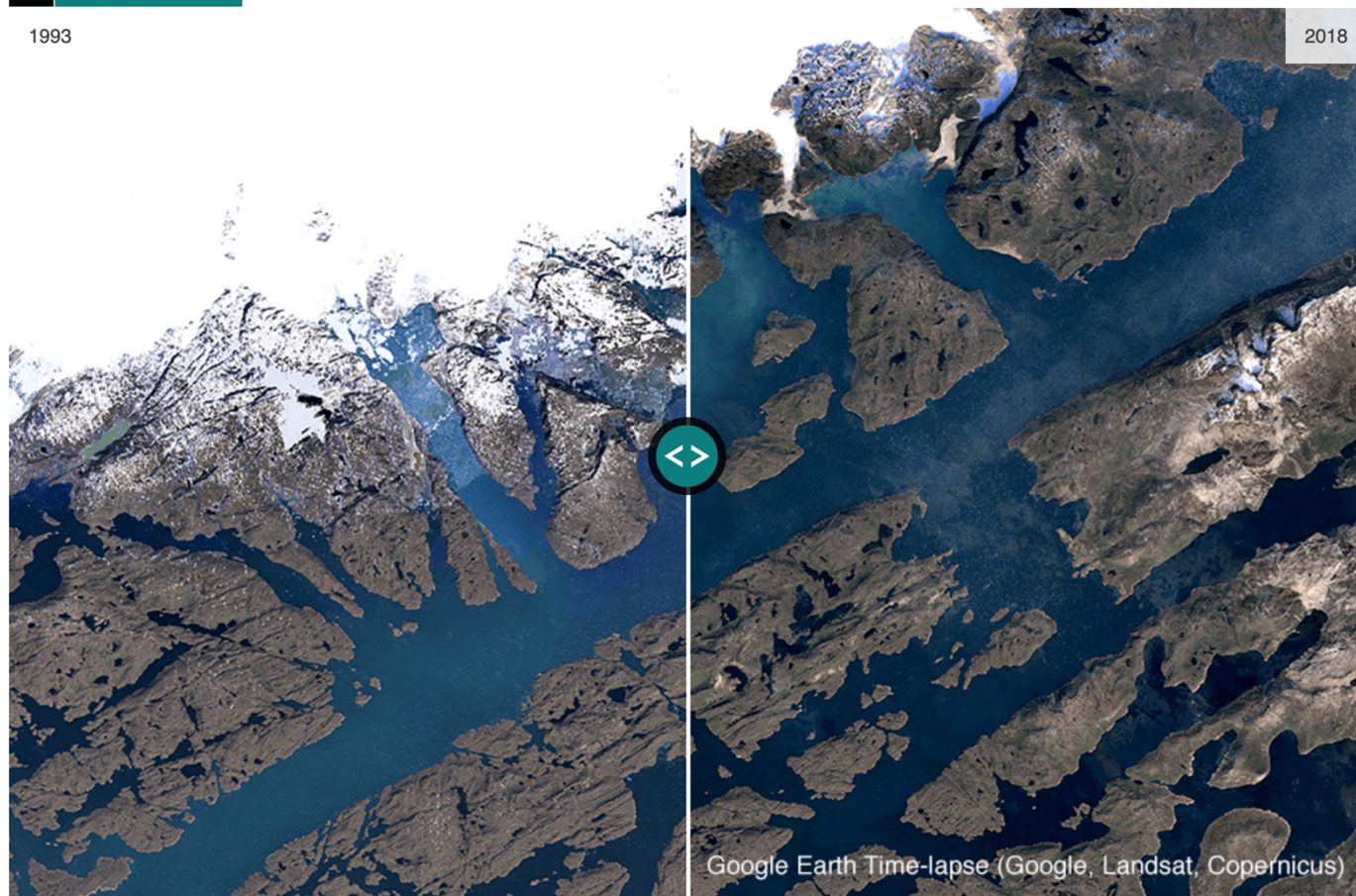


Sudden change?



The ice of Greenland

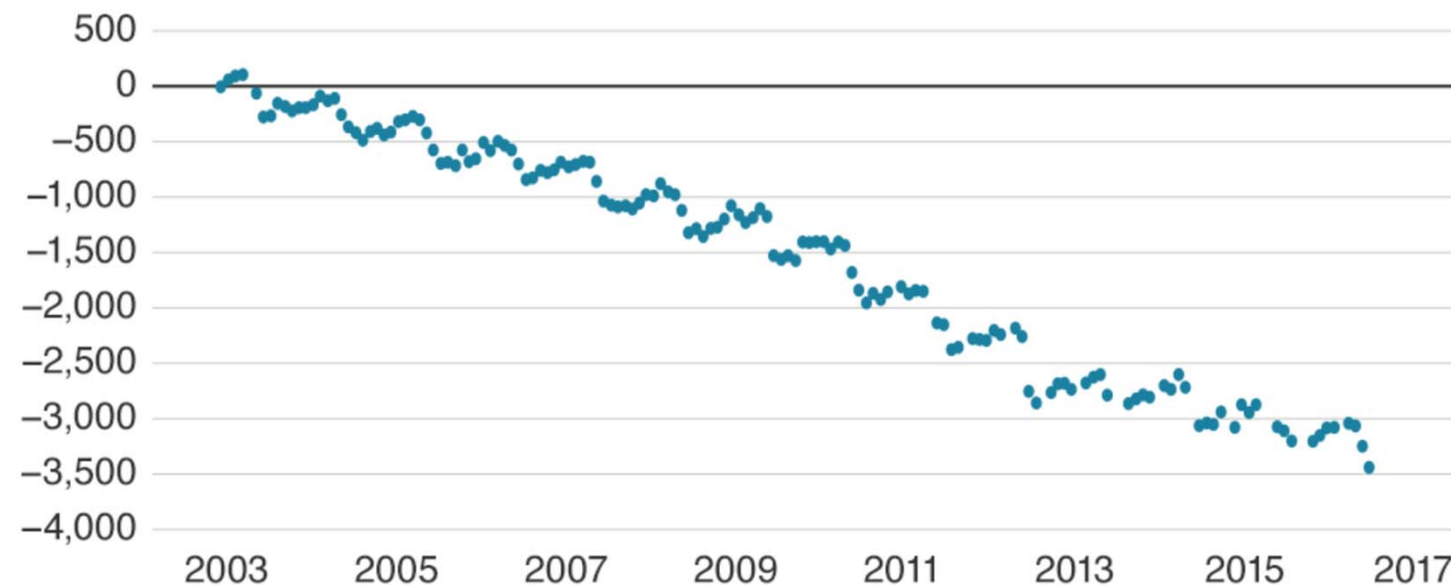
 **INTERACTIVE** Qaleraliq glacier, southern Greenland



The ice of Greenland

Greenland's ice sheet has lost three and a half trillion tonnes of ice since 2003

Change in mass of the ice sheet in Gigatonnes
(one Gt = one billion tonnes)



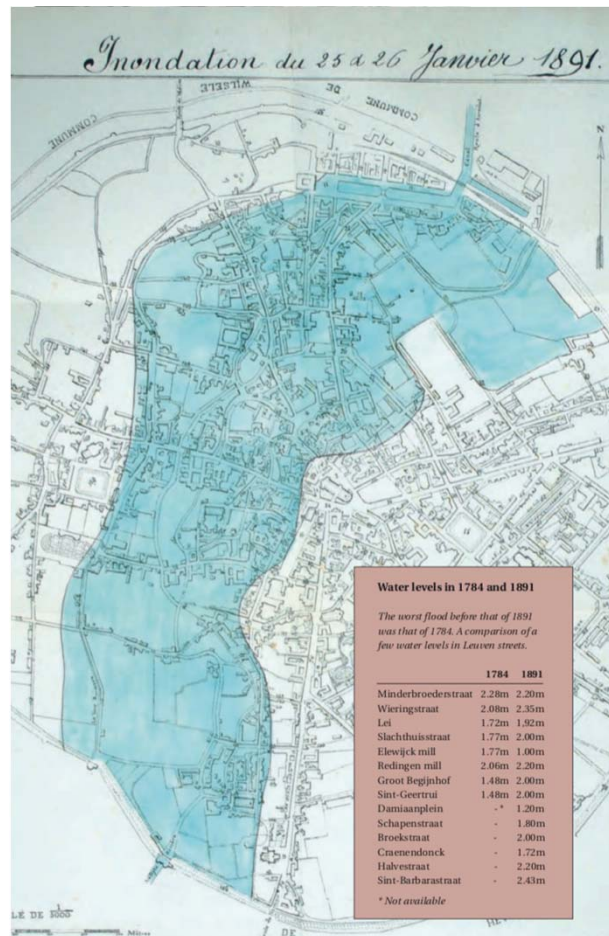
Source: National Space Institute, Technical University of Denmark



Hurray for global warming!



Regular extreme events



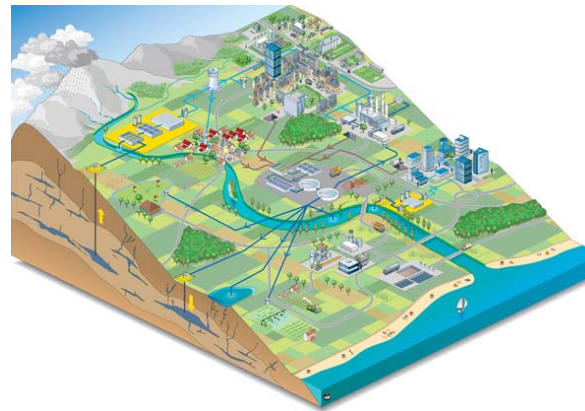
Regular extreme events



How to manage climate change?



Mitigation
+
Adaptation



Entire
Water
System



Work
Together



Thank you!
E:
s.swenne@vmm.be

