

# Climate change adaptation in Leuven

Let it sink in!



# Policy of Leuven on climate

## Aiming for a climate neutral and climate adaptive city challenges

- New policy context: Leuven works firmly towards a climate neutral and climate adaptive city
- Financial provisions for these actions in the multiannual planning
- Roadmap Leuven 2030 = guidelines for a climate neutral society in 2050
- Covenant of Mayors: ~~40%~~ greenhouse gas-reduction target by 2030  
Leuven = 1 of the 100 Climate-Neutral and Smart Cities by 2030  
= ambitious climate change mitigation policy and future-oriented climate change adaptation strategy



# Policy of Leuven on climate

## Aiming for a climate neutral and climate adaptive city challenges

### ■ Strategy concretized in different policy plans

- Climate action plan
- Rainwater plan
- Draught plan
- Green plan



# Policy of Leuven on climate

## Aiming for a climate neutral and climate adaptive city challenges

### ■ Strategy concretized in different policy plans

- Climate action plan
- Rainwater plan
- Draught plan
- Green plan
- Design basis in all projects (day-to-day street design)
- Climate team for planning actions
- Specific campaign: “Hier dringt het door!” ~ “Let it sink in!”
- Scaling it up thanks to EU support



# Let it sink in!

## Challenges in climate change adaptation

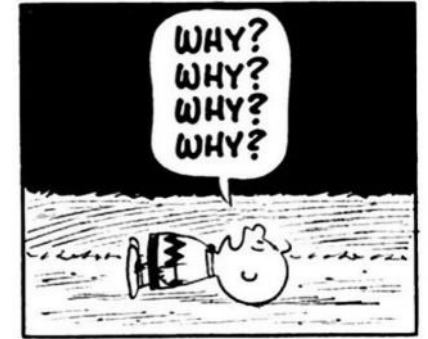
**Sense of resistance when applying actions related to climate change adaptation:**

**“Why? Why here? Not in my backyard! ...”**

**Main causes:**

- Lack of information
- Lack of involvement

 Convincing citizens by informing them, leading by example, including them in a process of co-creation



# Let it sink in!

## Step 1: List of possible Nature based solutions

- **Group 1 - On/around (public) buildings:**  
green-roof, vertical gardens, side-to-side climbing plant,...
- **Group 2 - In streets/sidewalks (removal of pavements):**  
open tree base, rain garden replacing pavement, permeable surfaces, infiltration trenches,...
- **Group 3 - Active participation:**  
green area maintained by citizens, neighbourhood vegetable garden, vertical garden, removing pavement in private garden,...
- **Group 4 - Trees:**  
urban trees, cooling trees, shade trees, arboreal areas, tiny forest,...
- **Group 5 - Open areas and squares:**  
water element/visualising water at square, water infiltration area, rain garden, flower meadow,...
- **Group 6 - Out-of-the-box (innovative measures):**  
garden street, opening private gardens, roof garden,...



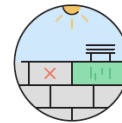
# Let it sink in!

## Step 2: Broad communication strategy

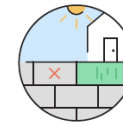
- Catchy slogan: ‘Let it sink in!’
- Website [hierdringthetdoor.be](http://hierdringthetdoor.be)
- Short movie
- Infographic en pictograms for project information (e.g. banners)
- Articles in city magazines: specific adaptation projects and the broader story



Aantal bomen in de straat, dat zijn er x-aantal meer dan voorheen.



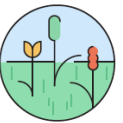
Vierkante meter verharding die verdwijnt op het openbaar domein.



Vierkante meter verharding die verdwijnt in voortuintjes.



Aantal nieuwe plantvakken in de straat, dat zijn er x-aantal meer dan voorheen.



Aantal vierkante meter bloemrijke beplanting in de straat.

# Let it sink in!

## Step 3: Select and execute examples on public domain

- **Engaging citizens by realising examples in the short term**
- **Demonstrating the value of extra green and less pavement**
- **Selection criteria:**
  - No complex designs (quick wins)
  - Large visual impact
  - Distributed over Leuven



# Let it sink in!

## Stap 3: Examples

### 's Hertogenwijngaard

Before



After



# Let it sink in!

## Step 3: Examples

### Penitentiënstraat

Before



After



# Let it sink in!

## Step 3: Examples

### Casinolaan

Before



After



# Let it sink in!

## Step 3: Examples

... and also



# Let it sink in!

## Step 3: Examples

... still to come in 2022

**Partisanenstraat**



**L. B. Dewezlaan**



**Invalidenlaan**



**Schoolbergenstraat**



# Let it sink in!

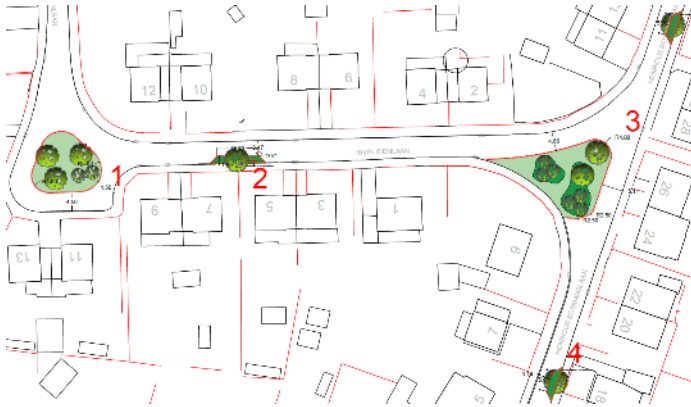
## Stap 3: Voorbeeldprojecten

... still to come in 2022

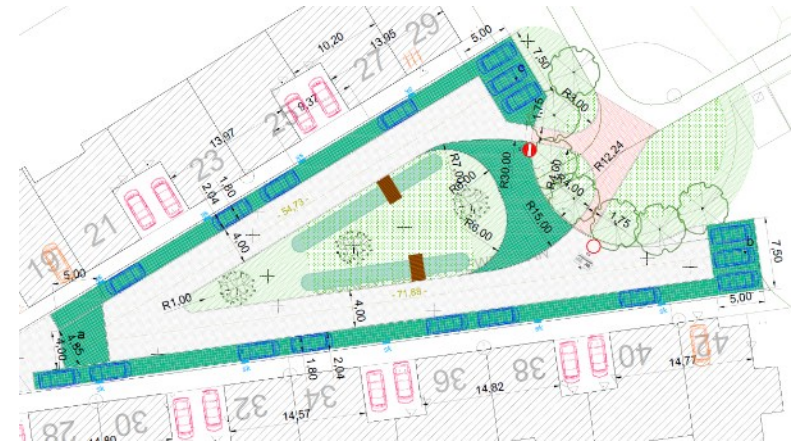
### Partisanenstraat



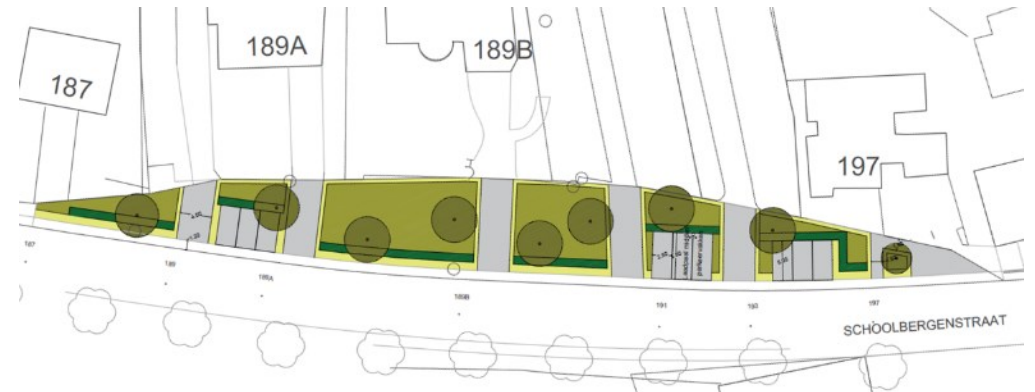
### Invalidenlaan



### L. B. Dewezlaan



### Schoolbergenstraat



# Let it sink in!

## Step 4: Citizen engagement

- **Direct involvement of citizens**

- Achieving public acceptance and support
- Demonstrating positive impact of NBS
- Mindshift, even for actions on private property



- Facade garden
- Pavement removal in front garden
- Green-roof
- Infiltration facility
- Rainwater tank
- Separation of sewer water
- Free advice by 'Garden Rangers' for a nature friendly garden



# Let it sink in!

## Step 4: Citizen engagement

- **Launch of public call on 21 januari 2022**
  - Specific boundary conditions
  - Selection of 8 projects by an internal jury
  - Execution summer/fall 2022

Where would you like to see more green? Submit a proposal.

**Waar zou jij graag meer groen zien?**

**Welke plekken in de stad kunnen we groener maken? Dien een voorstel in.**

Ken jij een verharde plek in de stad die vandaag weinig of niet gebruikt wordt en wat groen kan gebruiken? Dien je voorstel in voor 21 februari 2022.

Een jury kiest 8 locaties waar we verharding (bv. asfalt en beton) vervangen door groen.

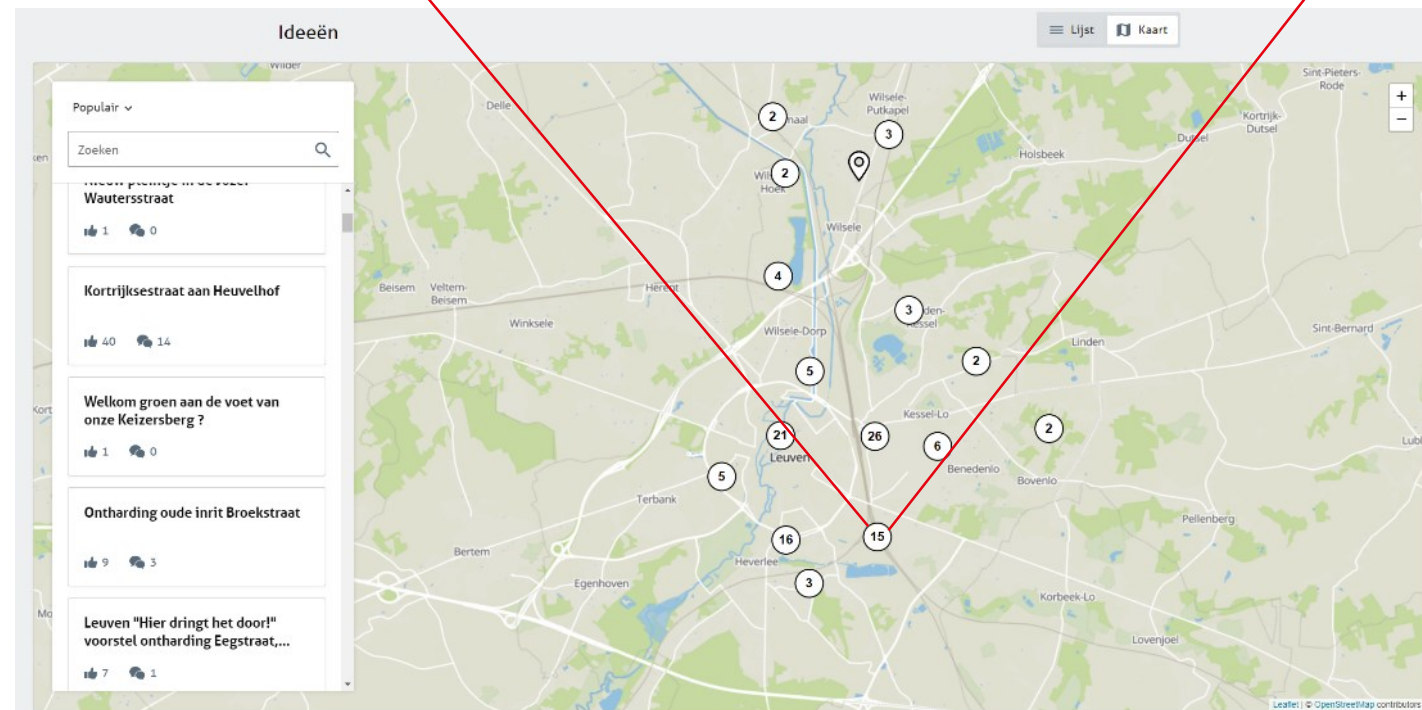
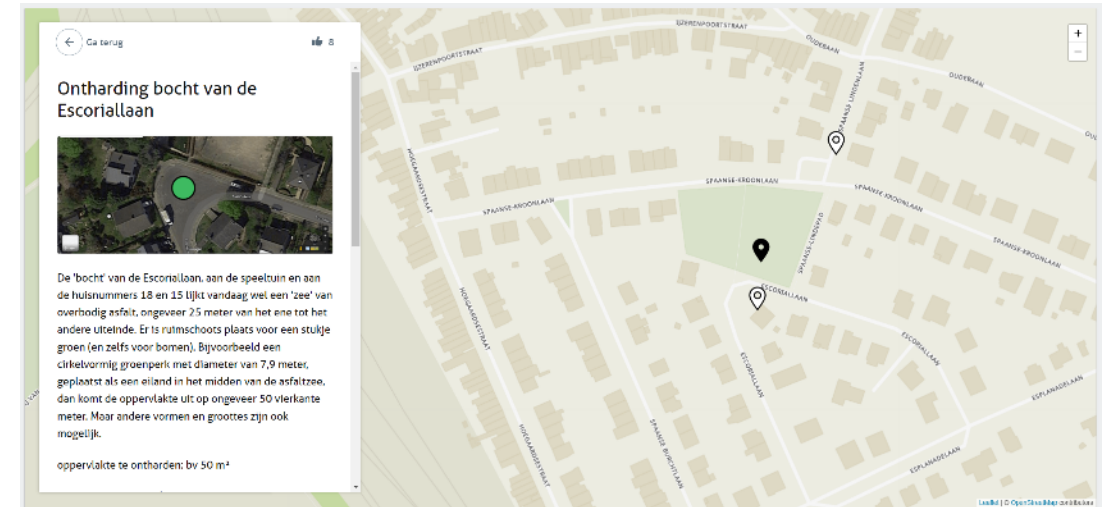




# Let it sink in!

## Stap 4: Citizen engagement

- **Very positive response**
  - +/- 145 ideas
  - Distributed over all Leuven
  - From small unused corners to ambitious plans



# Let it sink in!

## Future plans

- Execution of the 8 selected projects
- Execution of larger example projects
- Before and after images => continue to emphasise the impact of more green and less concrete
- Dissemination under the project slogan **'Let it sink in!'**
- Upscaling to street level in the Horizon 2020 JUSTNature project and to neighbourhood level in the LIFE – PACT project (Co-creation in Nature Based Solutions)





# Questions?

**Katleen Remeysen**

Ingeneer Public Works  
Professor Van Overstraetenplein 1  
3000 Leuven  
+32 16 27 25 00  
[katleen.remeysen@leuven.be](mailto:katleen.remeysen@leuven.be)

